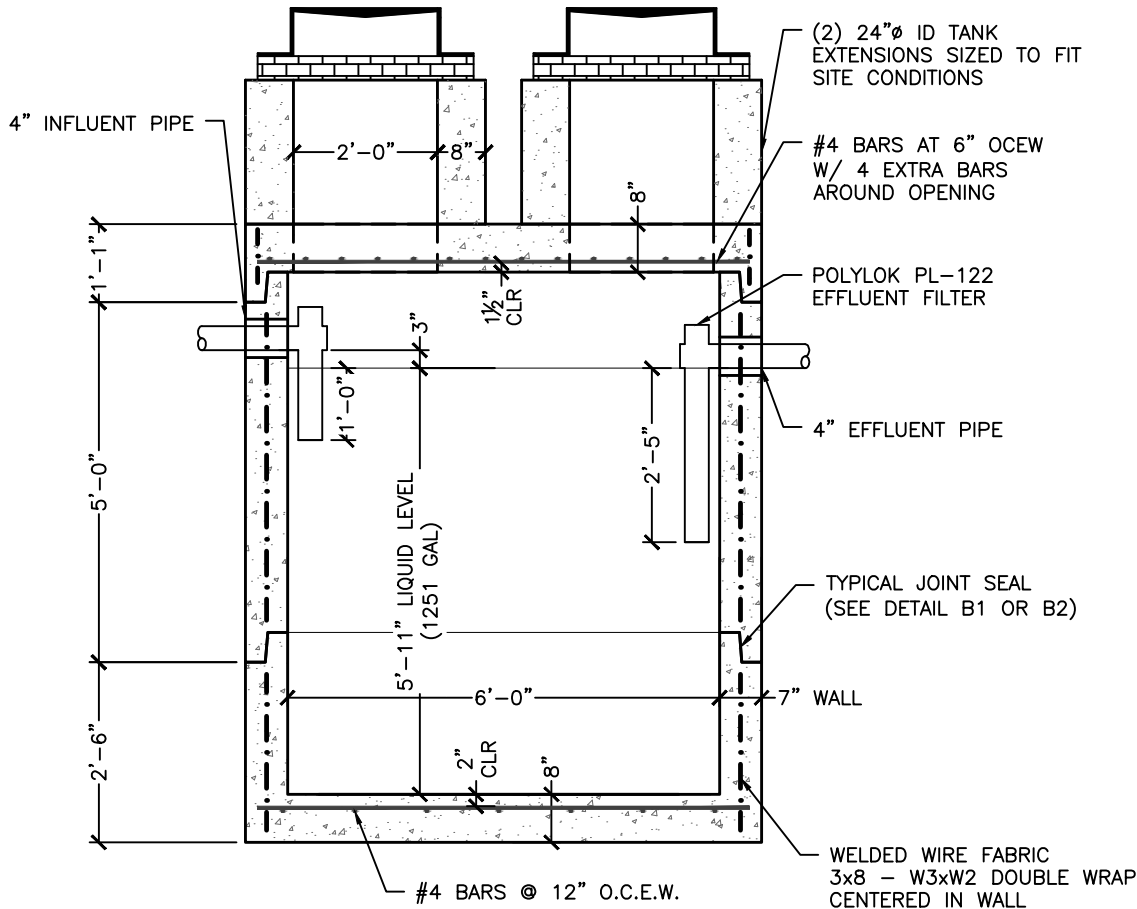

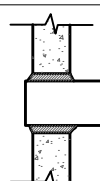

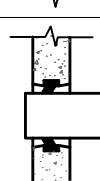
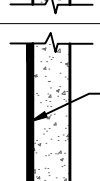
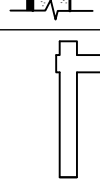


NOTE: PIPE SIZE LARGER THAN 4" MAY REQUIRE A TALLER STRUCTURE

NOTE:
ALTERNATE TOP SLAB REINFORCED TO MEET OR EXCEED REQUIREMENTS OF AASHTO HS20-44 LOADING.



BUTYL RUBBER JOINT SEALANT		B2
MORTAR PIPE CONNECTION		C1
FLEXIBLE SLEEVE PIPE CONNECTION		C2
COMPRESSION GASKET		C3
ASPHALTIC COATING		D
PIPE TEES & FILTER		E

NOTES:

1. MANUFACTURED TO MEET OR EXCEED REQUIREMENTS OF ASTM C-478 & AASHTO M-199 SPECIFICATIONS.
2. MEETS REQUIREMENTS OF NH CODE OF ADMIN RULES, PART ENV-WQ 1010 (SEPTIC TANKS).
3. CIRCUMFERENTIAL REINFORCEMENT SHALL CONFORM TO ASTM A-185. TOP/BOTTOM STEEL SHALL CONFORM TO ASTM A-615 GRADE 60 DEFORMED BARS. BOTH PLACED PER ASTM C-478 (8.1, 8.3, 8.4).
4. CONCRETE: 4,000 PSI MINIMUM @ 28 DAYS, PER ASTM C-478 (6.1). CEMENT TO BE PER ASTM C-150.
5. BUTYL RUBBER JOINT SEALANT PER ASTM C-990 & AASHTO M-198.
6. BITUMINOUS ASPHALT COATING (IF REQUIRED) TO BE SHOP APPLIED.

Revised: 7/21/14

DWG NO.
S1

Customer:

Project Name:
Project Location:

6' DIAMETER
1,250 GALLON COMMERCIAL SEPTIC TANK
Project No: Scale: AS SHOWN
Date: Designed by: Drawn by: PIL Checked by: XXX

MICHIE
CONCRETE
173 BUXTON INDUSTRIAL DRIVE-PO BOX 870
HENRIKER, NH 03242
PHONE: 603-428-3218
FAX: 603-428-7426
www.michiecorp.com