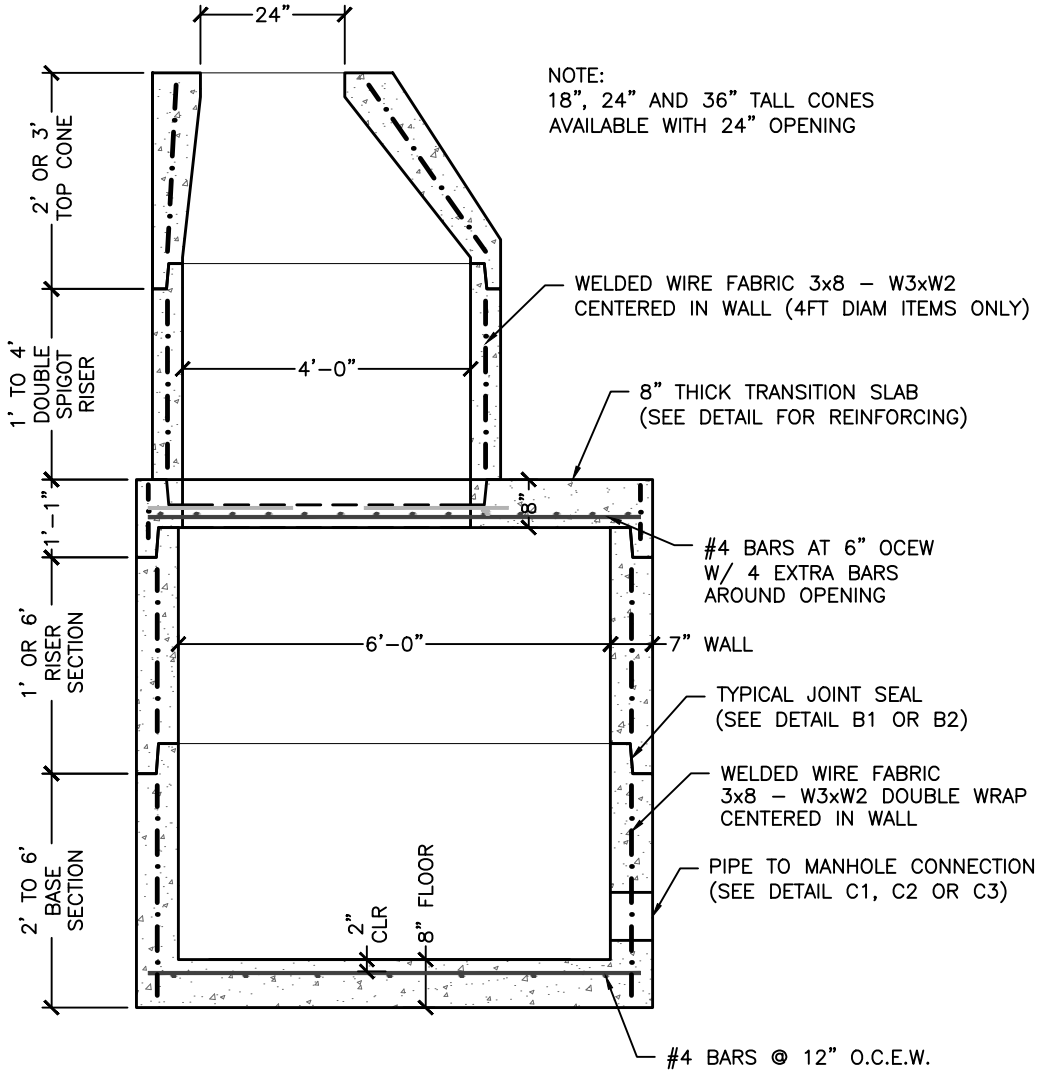
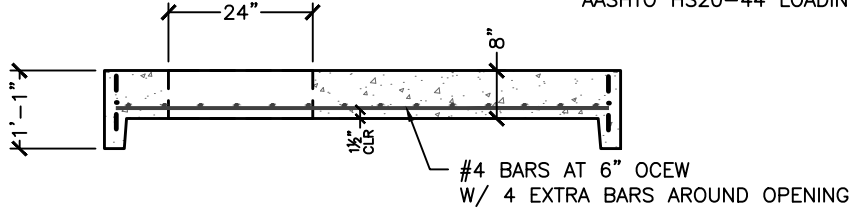


NOTE:  
ALTERNATE TOP SLAB REINFORCED TO  
MEET OR EXCEED REQUIREMENTS OF  
AASHTO HS20-44 LOADING.



NOTES:

1. MANUFACTURED TO MEET OR EXCEED REQUIREMENTS OF ASTM C-478 & AASHTO M-199 SPECIFICATIONS.
2. CIRCUMFERENTIAL REINFORCEMENT SHALL CONFORM TO ASTM A-185. TOP/BOTTOM STEEL SHALL CONFORM TO ASTM A-615 GRADE 60 DEFORMED BARS. BOTH PLACED PER ASTM C-478 (8.1, 8.3, 8.4).
3. CONCRETE: 4,000 PSI MINIMUM @ 28 DAYS, PER ASTM C-478 (6.1). CEMENT TO BE PER ASTM C-150.
4. BUTYL RUBBER JOINT SEALANT PER ASTM C-990 & AASHTO M-198.
5. BITUMINOUS ASPHALT COATING (IF REQUIRED) TO BE SHOP APPLIED.

MORTAR BY CONTRACTOR		B1
BUTYL RUBBER JOINT SEALANT		B2
MORTAR PIPE CONNECTION		C1
FLEXIBLE SLEEVE PIPE CONNECTION		C2
COMPRESSION GASKET		C3
ASPHALTIC COATING		D

Revised: 7/21/14

DWG NO.  
S1

Customer:

Project Name:  
Project Location:

6' DIAMETER CATCH BASIN

Project No:

Scale: AS SHOWN

Date:

Designed by:

Drawn by: PIL

Checked by: XXX



173 BUXTON INDUSTRIAL DRIVE-PO BOX 870  
HENRIKER, NH 03242  
PHONE: 603-428-3218  
FAX: 603-428-7426  
www.michiecorp.com