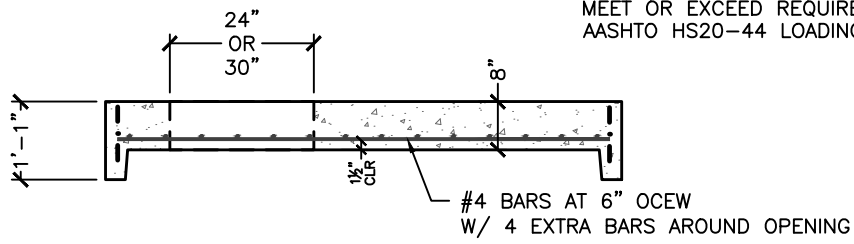
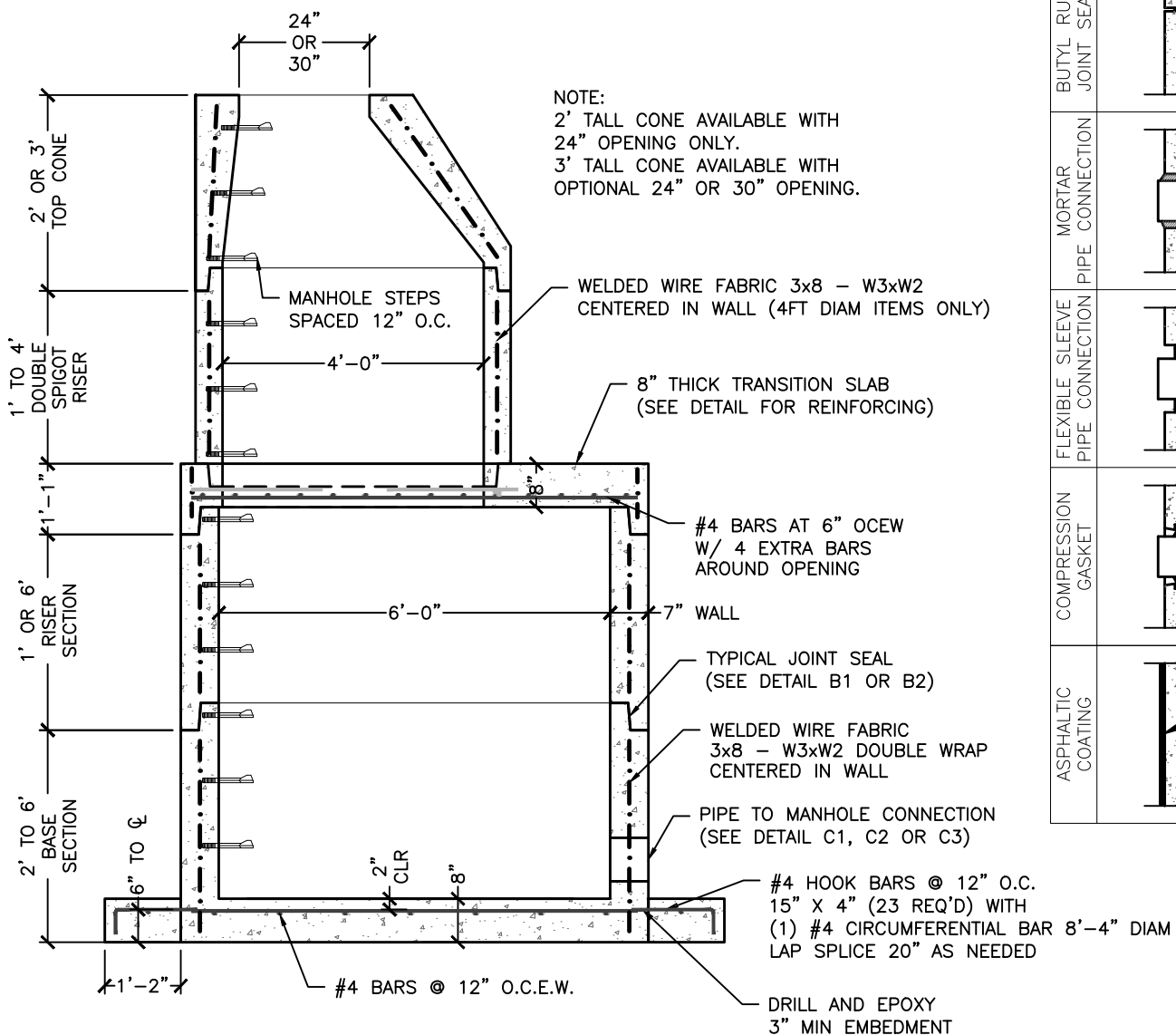


NOTE:  
ALTERNATE TOP SLAB REINFORCED TO MEET OR EXCEED REQUIREMENTS OF AASHTO HS20-44 LOADING.



NOTE:  
2' TALL CONE AVAILABLE WITH 24" OPENING ONLY.  
3' TALL CONE AVAILABLE WITH OPTIONAL 24" OR 30" OPENING.



- NOTES:
1. MANUFACTURED TO MEET OR EXCEED REQUIREMENTS OF ASTM C-478 & AASHTO M-199 SPECIFICATIONS.
  2. CIRCUMFERENTIAL REINFORCEMENT SHALL CONFORM TO ASTM A-185. TOP/BOTTOM STEEL SHALL CONFORM TO ASTM A-615 GRADE 60 DEFORMED BARS. BOTH PLACED PER ASTM C-478 (8.1, 8.3, 8.4).
  3. CONCRETE: 4,000 PSI MINIMUM @ 28 DAYS, PER ASTM C-478 (6.1). CEMENT TO BE PER ASTM C-150.
  4. MANHOLE STEPS TO BE POLYPROPYLENE COATED GRADE 60 REINFORCING BAR, PER ASTM C-478 & OSHA 1-1.9
  5. BUTYL RUBBER JOINT SEALANT PER ASTM C-990 & AASHTO M-198.
  6. BITUMINOUS ASPHALT COATING (IF REQUIRED) TO BE SHOP APPLIED.

POLYPROPYLENE MANHOLE STEP		A
MORTAR BY CONTRACTOR		B1
BUTYL RUBBER JOINT SEALANT		B2
MORTAR PIPE CONNECTION		C1
FLEXIBLE SLEEVE PIPE CONNECTION		C2
COMPRESSION GASKET		C3
ASPHALTIC COATING		D

Revised: 1/21/13

DWG NO. S1	Customer:	Project Name:	<b>6' DIAMETER MANHOLE WITH EXTENDED BASE</b> Scale: AS SHOWN	 173 BUXTON INDUSTRIAL DRIVE-PO BOX 870 HENRIKER, NH 03242 PHONE: 603-428-3218 FAX: 603-428-7426 www.michiecorp.com
		Project Location:		