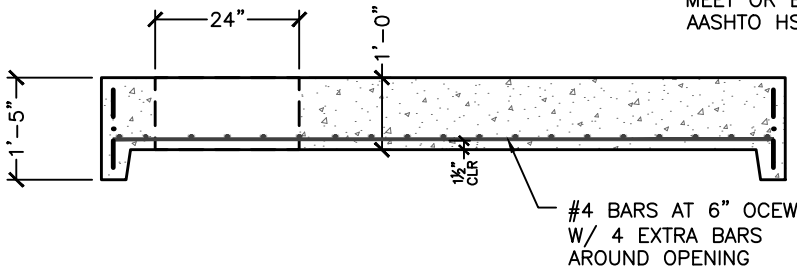
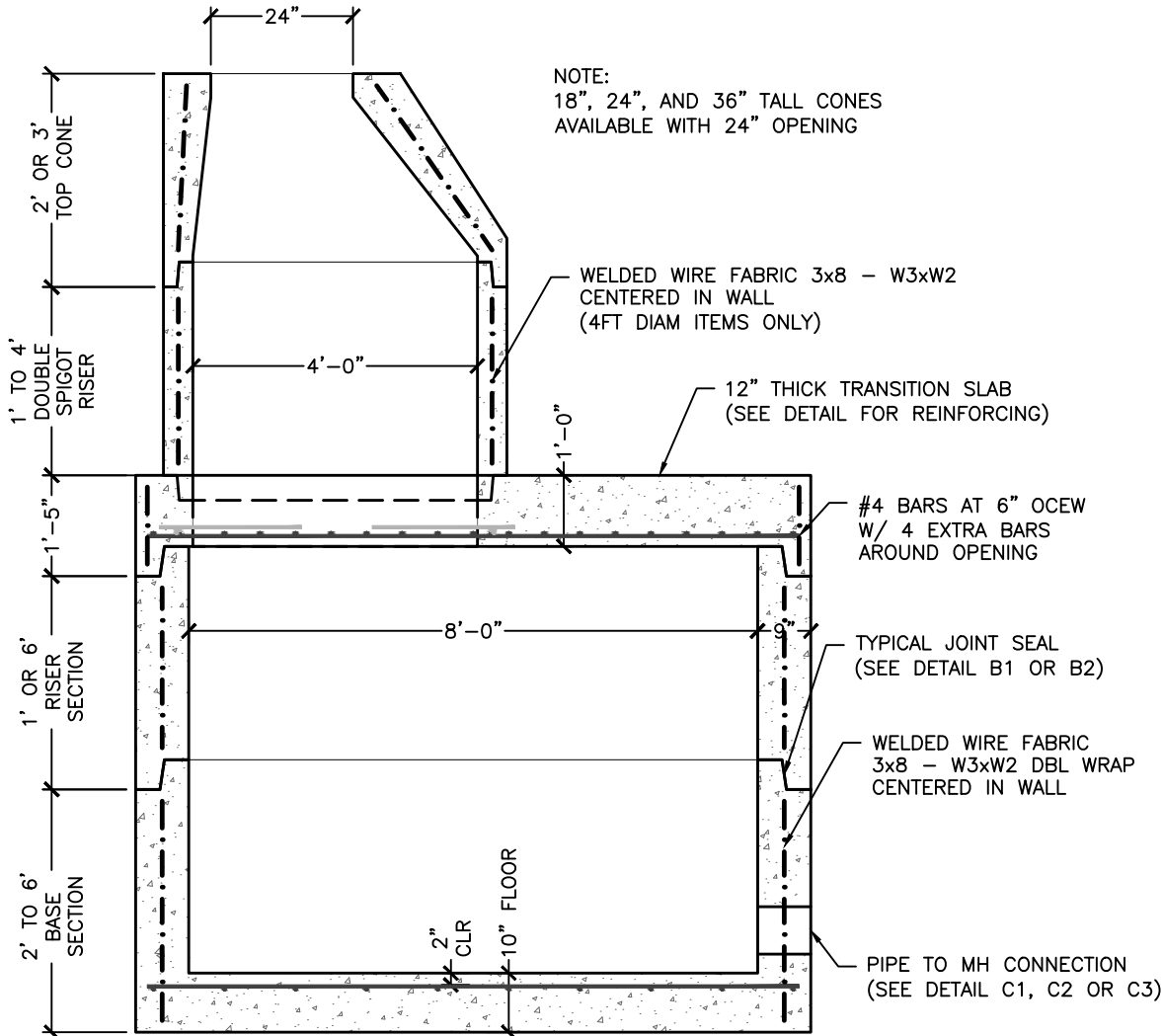


NOTE:
ALTERNATE TOP SLAB REINFORCED TO
MEET OR EXCEED REQUIREMENTS OF
AASHTO HS20-44 LOADING.



NOTE:
18", 24", AND 36" TALL CONES
AVAILABLE WITH 24" OPENING



MORTAR BY CONTRACTOR		B1
BUTYL RUBBER JOINT SEALANT		B2
MORTAR PIPE CONNECTION		C1
FLEXIBLE SLEEVE PIPE CONNECTION		C2
COMPRESSION GASKET		C3
ASPHALTIC COATING		D

NOTES:

1. MANUFACTURED TO MEET OR EXCEED REQUIREMENTS OF ASTM C-478 & AASHTO M-199 SPECIFICATIONS.
2. CIRCUMFERENTIAL REINFORCEMENT SHALL CONFORM TO ASTM A-185. TOP/BOTTOM STEEL SHALL CONFORM TO ASTM A-615 GRADE 60 DEFORMED BARS. BOTH PLACED PER ASTM C-478 (8.1, 8.3, 8.4).
3. CONCRETE: 4,000 PSI MINIMUM @ 28 DAYS, PER ASTM C-478 (6.1). CEMENT TO BE PER ASTM C-150.
4. BUTYL RUBBER JOINT SEALANT PER ASTM C-990 & AASHTO M-198.
5. BITUMINOUS ASPHALT COATING (IF REQUIRED) TO BE SHOP APPLIED.

Revised: 7/21/14

DWG NO. S1	Customer:	Project Name: Project Location:	8' DIAMETER CATCH BASIN Project No. _____ Date: _____ Scale: AS SHOWN Designed by: _____ Drawn by: PDH Checked by: XXX	 173 BUXTON INDUSTRIAL DRIVE-PO BOX 870 HENRIKER, NH 03242 PHONE: 603-428-3218 FAX: 603-428-7426 www.michiecorp.com