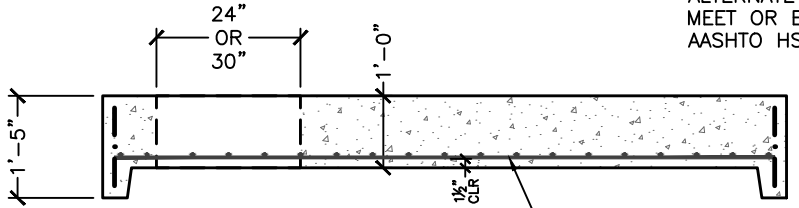
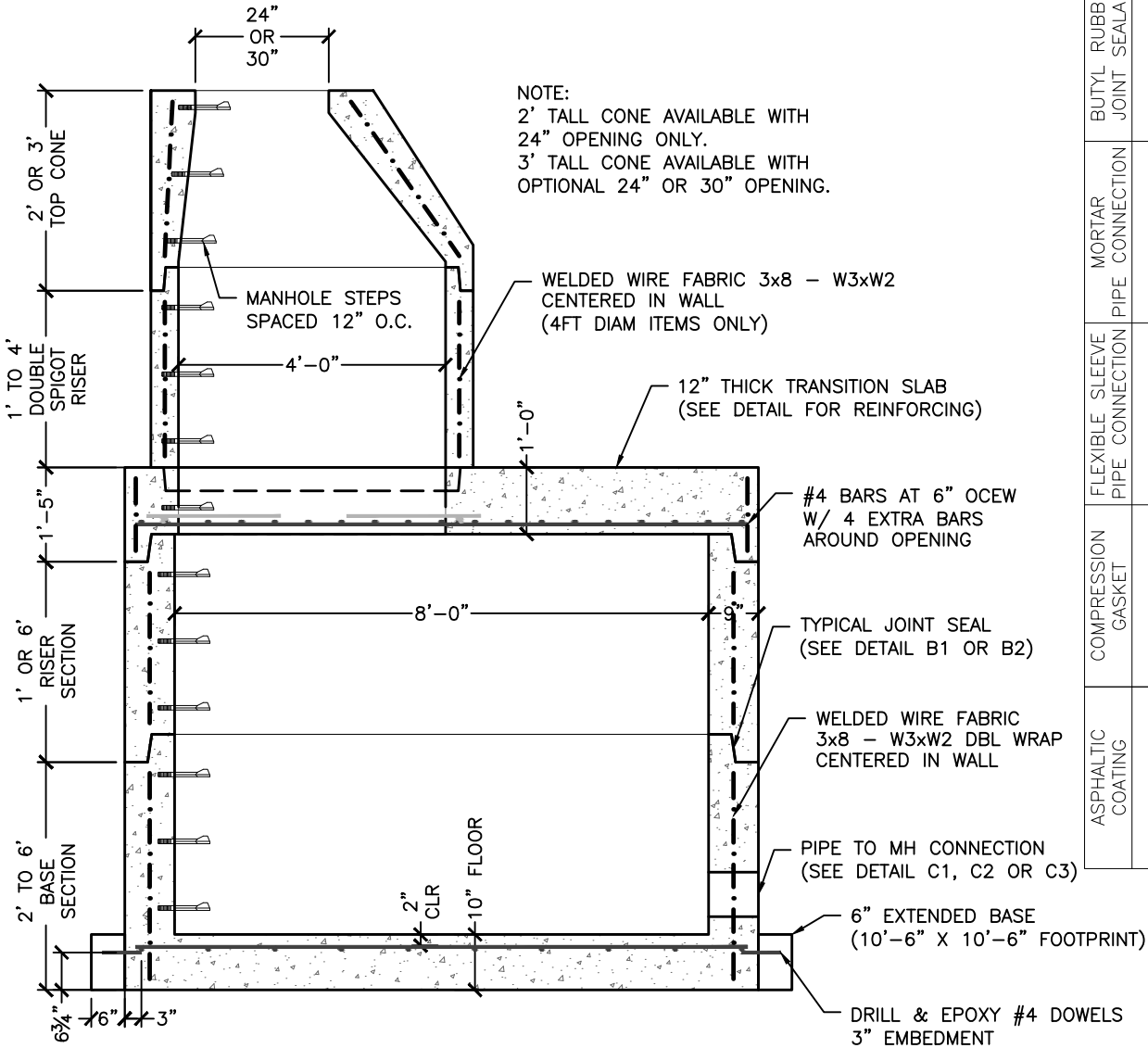


NOTE:  
ALTERNATE TOP SLAB REINFORCED TO MEET OR EXCEED REQUIREMENTS OF AASHTO HS20-44 LOADING.



#4 BARS AT 6" OCEW  
W/ 4 EXTRA BARS  
AROUND OPENING

NOTE:  
2' TALL CONE AVAILABLE WITH  
24" OPENING ONLY.  
3' TALL CONE AVAILABLE WITH  
OPTIONAL 24" OR 30" OPENING.



POLYPROPYLENE MANHOLE STEP		A
MORTAR BY CONTRACTOR		B1
BUTYL RUBBER JOINT SEALANT		B2
MORTAR PIPE CONNECTION		C1
FLEXIBLE SLEEVE PIPE CONNECTION		C2
COMPRESSION GASKET		C3
ASPHALTIC COATING		D

NOTES:

1. MANUFACTURED TO MEET OR EXCEED REQUIREMENTS OF ASTM C-478 & AASHTO M-199 SPECIFICATIONS.
2. CIRCUMFERENTIAL REINFORCEMENT SHALL CONFORM TO ASTM A-185. TOP/BOTTOM STEEL SHALL CONFORM TO ASTM A-615 GRADE 60 DEFORMED BARS. BOTH PLACED PER ASTM C-478 (8.1, 8.3, 8.4).
3. CONCRETE: 4,000 PSI MINIMUM @ 28 DAYS, PER ASTM C-478 (6.1). CEMENT TO BE PER ASTM C-150.
4. MANHOLE STEPS TO BE POLYPROPYLENE COATED GRADE 60 REINFORCING BAR, PER ASTM C-478 & OSHA 1-1.9
5. BUTYL RUBBER JOINT SEALANT PER ASTM C-990 & AASHTO M-198.
6. BITUMINOUS ASPHALT COATING (IF REQUIRED) TO BE SHOP APPLIED.

Revised: 7/21/14

Customer:

Project Name:  
Project Location:

8' DIAMETER MANHOLE  
w/ EXTENDED BASE

773 BUXTON INDUSTRIAL DRIVE-PO BOX 870  
HENRIKER, NH 03242  
PHONE: 603-428-3218  
FAX: 603-428-7426  
www.michiecorp.com

DWG NO.  
S1

Project No.

Scale: AS SHOWN

Date:

Designed by:

Drawn by: PDH

Checked by: XXX