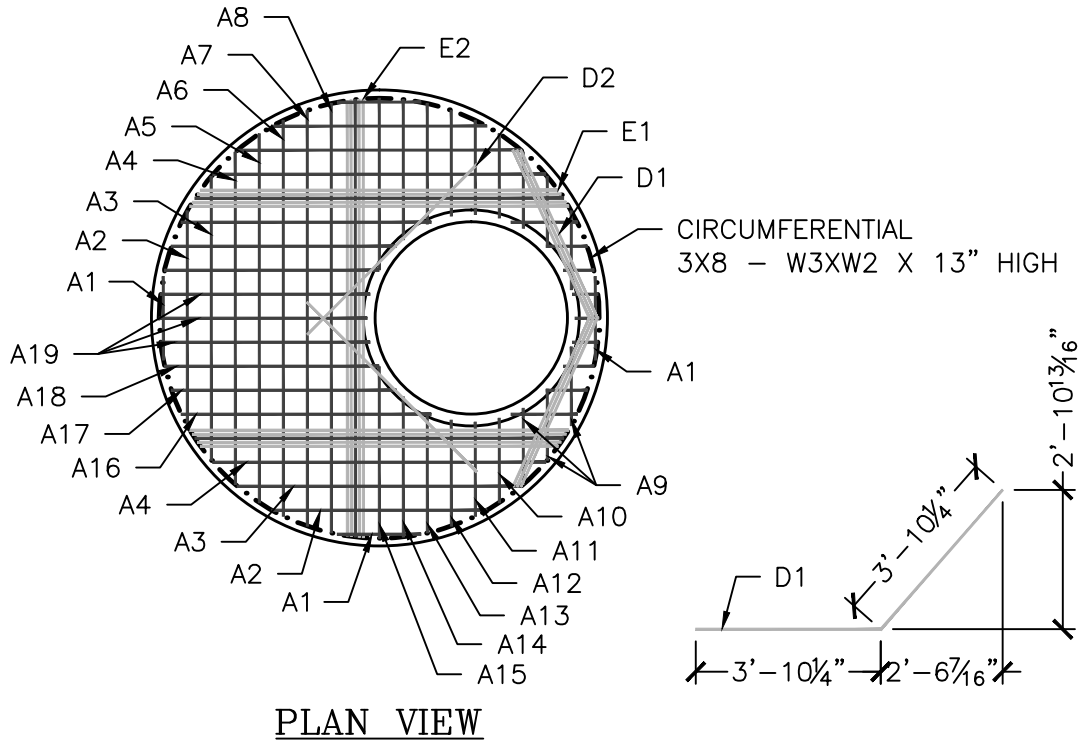
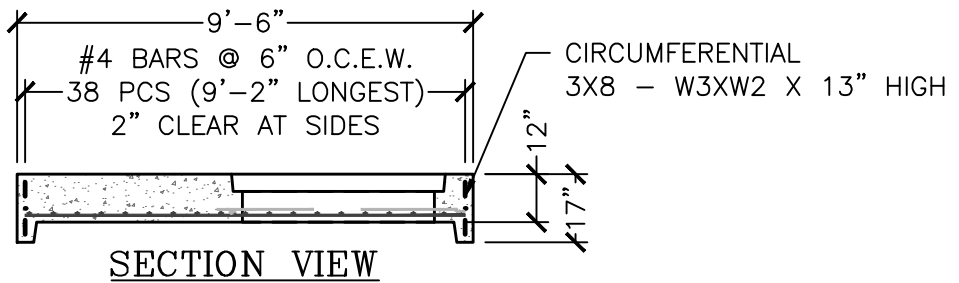


REINFORCING SCHEDULE (ALL BARS #4)					
LOCATION	MARK	NO. PCS.	TYPE	LENGTH	NOTES:
DIAGONAL	D1	3	L	7'-8 1/2"	BENT BARS BUNDLED
DIAGONAL	D2	2	STRAIGHT	5'-8"	
MAT + EXTRA	E1	10	STRAIGHT	7'-8"	2" O.C. OR BUNDLED
MAT + EXTRA	E2	5	STRAIGHT	9'-1 1/4"	2" O.C. OR BUNDLED
MAT STEEL	A1	4	STRAIGHT	1'-9"	
MAT STEEL	A2	4	STRAIGHT	4'-5 1/2"	
MAT STEEL	A3	4	STRAIGHT	5'-11"	
MAT STEEL	A4	4	STRAIGHT	6'-11"	
MAT STEEL	A5	1	STRAIGHT	7'-8 1/4"	
MAT STEEL	A6	1	STRAIGHT	7'-3"	
MAT STEEL	A7	1	STRAIGHT	8'-8"	
MAT STEEL	A8	1	STRAIGHT	8'-11"	
MAT STEEL	A9	6	STRAIGHT	1'-7 3/4"	
MAT STEEL	A10	2	STRAIGHT	1'-9"	
MAT STEEL	A11	2	STRAIGHT	1'-11 1/2"	
MAT STEEL	A12	2	STRAIGHT	2'-2 1/2"	
MAT STEEL	A13	2	STRAIGHT	2'-6"	
MAT STEEL	A14	2	STRAIGHT	2'-11"	
MAT STEEL	A15	2	STRAIGHT	3'-7"	
MAT STEEL	A16	2	STRAIGHT	5'-2 1/2"	
MAT STEEL	A17	2	STRAIGHT	4'-8 1/4"	
MAT STEEL	A18	2	STRAIGHT	4'-5 5/8"	
MAT STEEL	A19	3	STRAIGHT	4'-4"	
CIRCUMFERENCIAL			MESH	59'-1" ±	3X8 - W3XW2 X 17" HIGH



**PLAN VIEW**



**SECTION VIEW**

**NOTES:**

1. MANUFACTURED TO MEET OR EXCEED REQUIREMENTS OF ASTM C-478 & AASHTO M-199 SPECIFICATIONS.
2. REINFORCEMENT SHALL CONFORM TO ASTM A-185 & A-615 GRADE 60 DEFORMED BARS. BOTH PLACED PER ASTM C-478 (8.1, 8.3, 8.4).
3. CONCRETE: 4,000 PSI MINIMUM @ 28 DAYS, PER ASTM C-478 (6.1). CEMENT TO BE PER ASTM C-150.

Revised: 7/21/14

DWG NO.  
S1

Customer:

Project Name:  
Project Location:

8' DIAMETER TRANSITION SLAB

Project No.

Scale: AS SHOWN

Date:

Designed by:

Drawn by: PDH

Checked by: XXX



173 BUXTON INDUSTRIAL DRIVE-PO BOX 870  
HENNIKER, NH 03242  
PHONE: 603-428-3218  
FAX: 603-428-7426  
www.michiecorp.com